



Melksham Square, Elm Tree, Stockton-On-Tees, TS19 0TL

This END TERRACE house is an ideal first purchase or family home. Well positioned with pleasant views over a greenbelt and in a popular residential location within walking distance of reputable schools and easy access of local shops, amenities and bus routes.

The property has been well looked after with recent upgrades, including a new boiler and refitted shower room. Accommodation briefly comprises hallway, lounge, good sized kitchen/dining room incorporating built in fridge, freezer, oven and gas hob. To the first floor are three bedrooms and modern shower room.

Outside space includes an enclosed landscaped garden to the front and a low maintenance decked rear garden with versatile shed/homemade bar, perfect for entertaining. Viewings are highly recommended.

Asking Price £110,000



Melksham Square, Elm Tree, Stockton-On-Tees, TS19 0TL

HALL

LOUNGE

15'9" x 11'4" (4.80m x 3.45m)

KITCHEN/DINING ROOM

10'7" x 11'4" (3.23m x 3.45m)

LANDING

BEDROOM ONE

11'9" x 8'4" (3.58m x 2.54m)

BEDROOM TWO

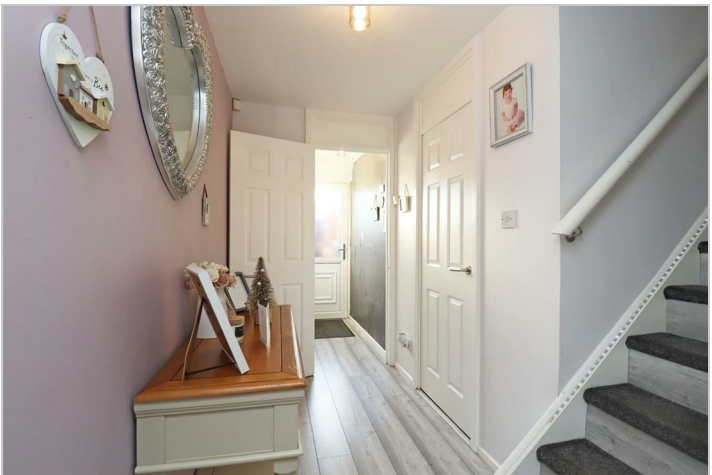
11'6" x 8'7" (3.51m x 2.62m)

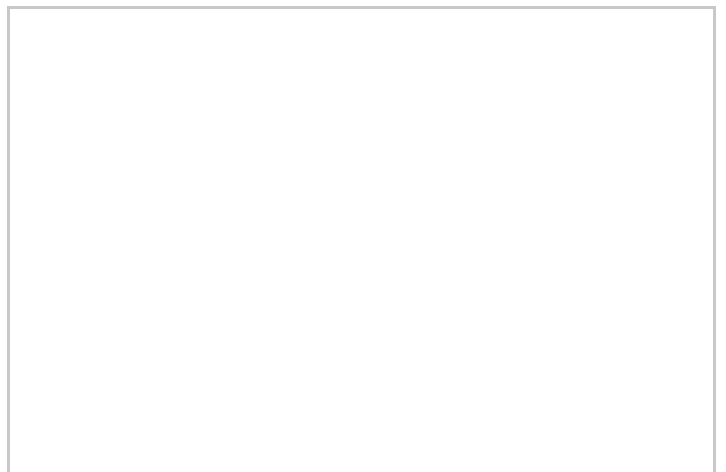
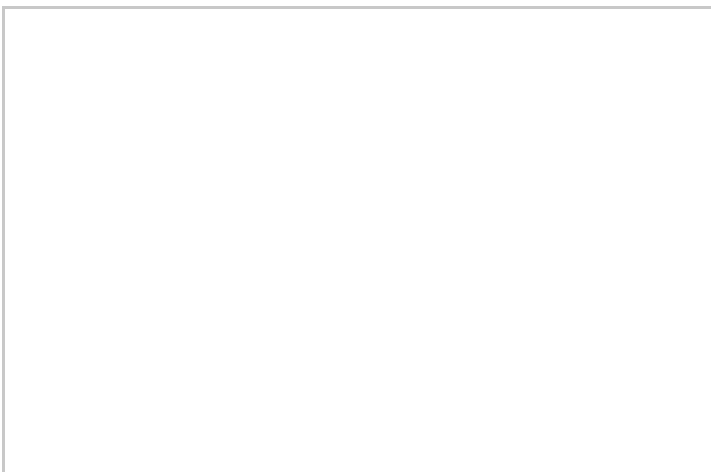
BEDROOM THREE

6'10" x 8'8" (2.08m x 2.64m)

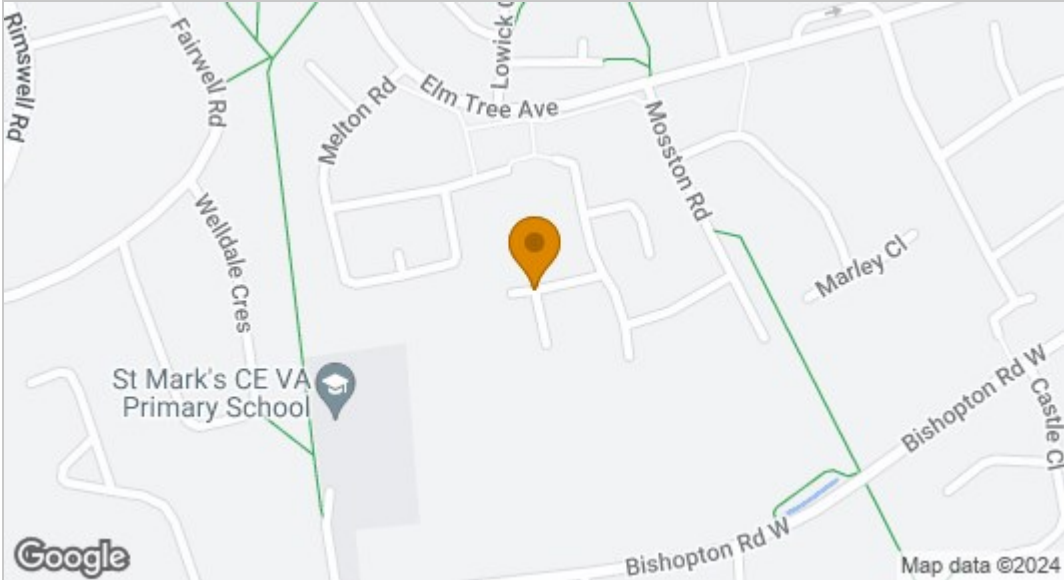
SHOWER ROOM

8'5" x 7'1" (2.57m x 2.16m)

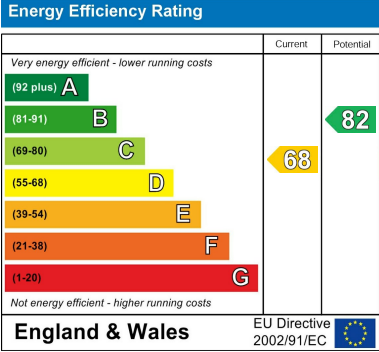




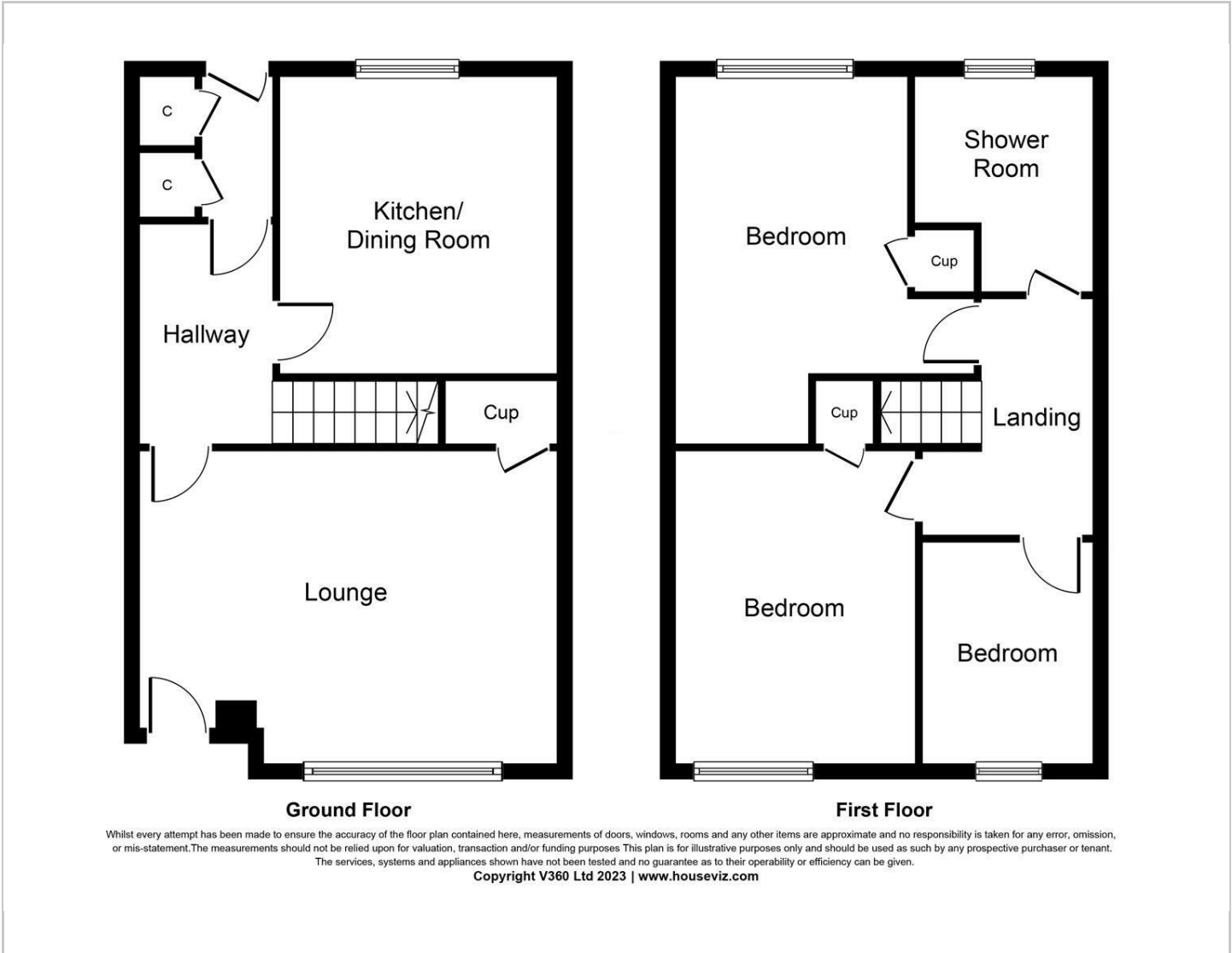
Map



EPC graph



Floor Plan



VIEWING

Please contact us on 01642 615657 if you wish to arrange a viewing or would like more information.

These particulars, whilst believed to be accurate are set out as a general outline only for guidance and do not constitute any part of an offer or contract. Intending purchasers should not rely on them as statements of representation of fact, but must satisfy themselves by inspection or otherwise as to their accuracy. No person in this firms employment has the authority to make or give any representation or warranty in respect of the property.